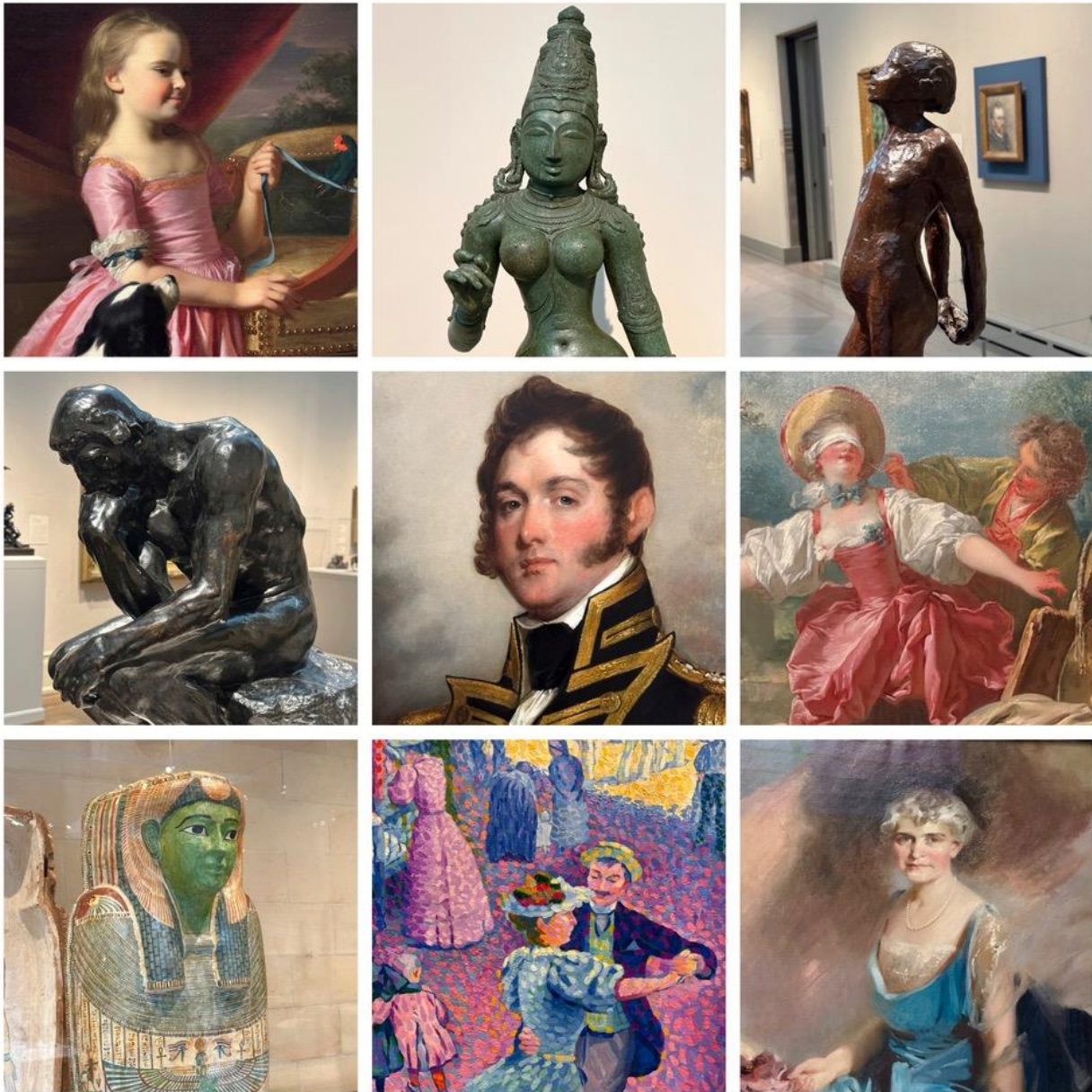


All of these images can be found in the Main Museum



Look Closely.....What do you see?

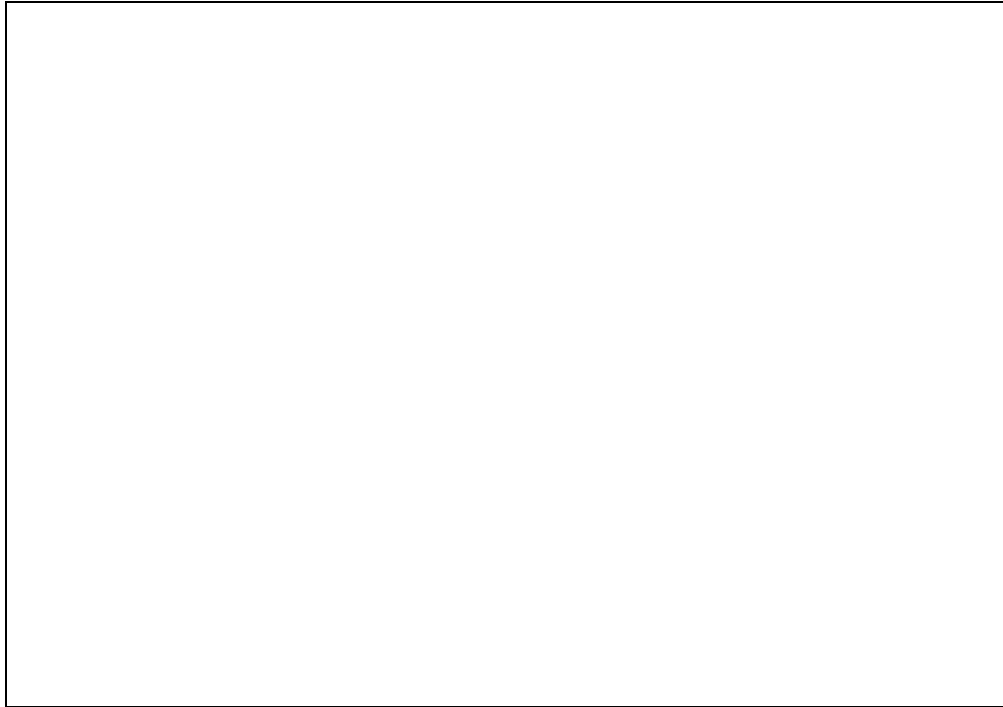
First Row: John Singleton Copley, *Young Lady with Bird and Dog*, 1767; India, *Parvati*, Chola Dynasty, about 860-1279; Edgar Degas, *Study for Little Dancer Aged Fourteen*, bronze cast 1919-21. **Second Row:** Auguste Rodin, *The Thinker*, about 1880; Gilbert Stuart and Jane Stuart, *Commodore Oliver Hazard Perry*, 1818-28; Jean-Honoré Fragonard, *Blind Man's Buff*, about 1750-52. **Third Row:** Egyptian, *Coffin of Ta-Mit*, Dynasty 26, 664-525 BCE; Henri Edmond Cross, *At the Fair*, 1896; Jean MacLane, *Florence Scott Libbey*, about 1933.



All of these images can be found in the Main Museum

Draw it

A Portrait is a work of art that features a person. Choose a portrait from the images and draw it here:



Do It

Have one person in your group choose a work of art from the images that features a figure posing in an interesting way. Take turns selecting different poses to imitate until everyone has had a turn.

Write it

Choose one of these images that you really like and describe it:
